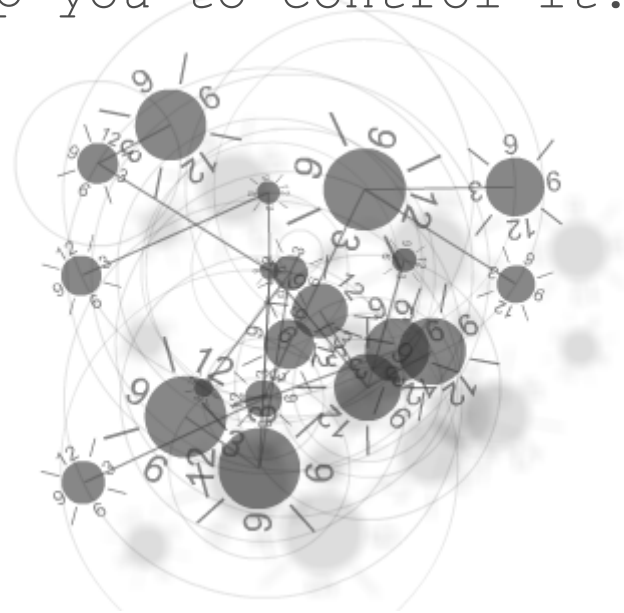




TAILOR MADE
SOFTWARE SOLUTIONS,
DESIGNED FOR
YOUR COMPANY

Each industrial process is based on **time factor**, we can help you to control it.



POLIFEMO XE

Monitoring Schedule and Production Management



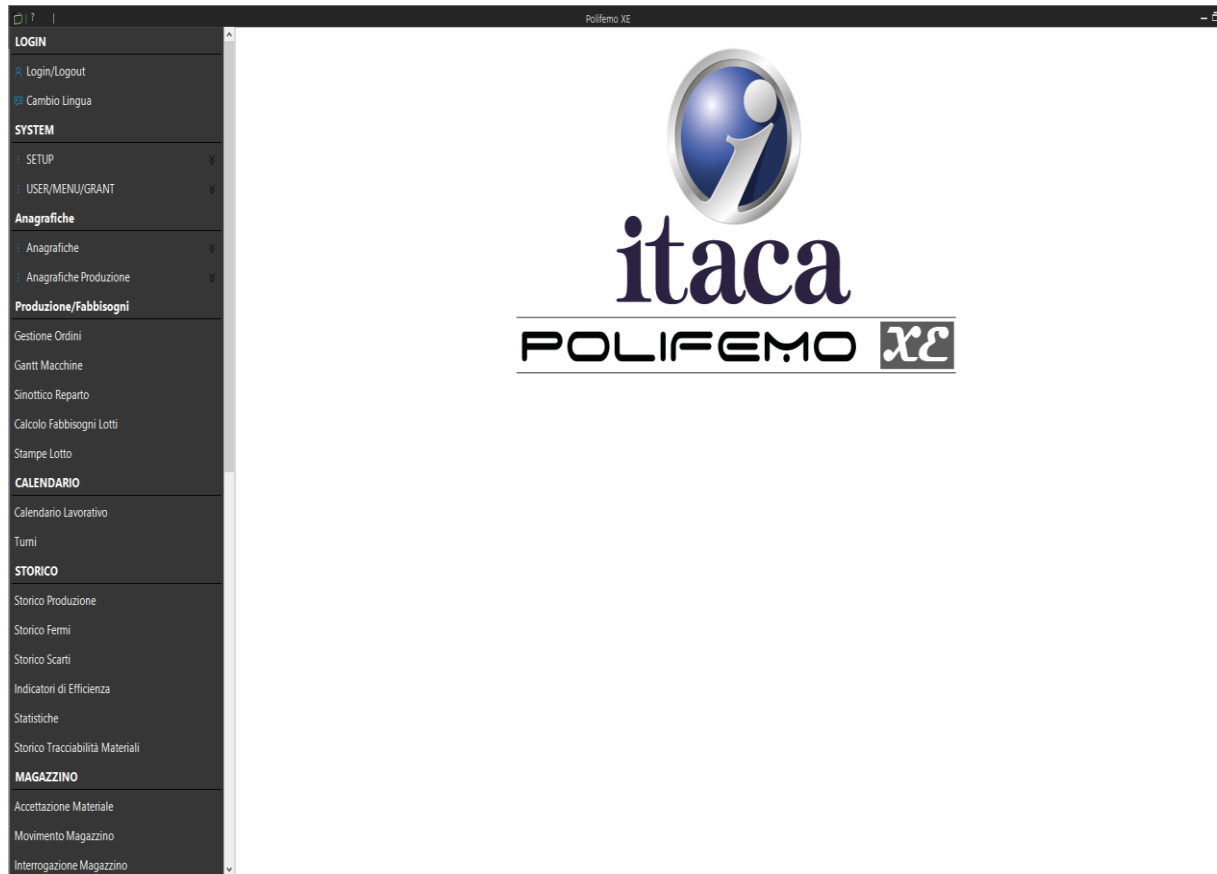
Main features

- **Communication** and data exchange with company software system or “stand alone” option.
- **Production scheduling** using a **Gantt** chart **by Drag & Drop**.
- **Synoptic of** department production with **real time** visualization.
- **Synoptic of machineries** to analyze and manage production and parametric data.
- **Production timeline**, downtime, scraps.
- **Statistics** and **production efficiency indicators**.



TAILOR MADE SOFTWARE SOLUTIONS

HOME PAGE — MAIN MENU

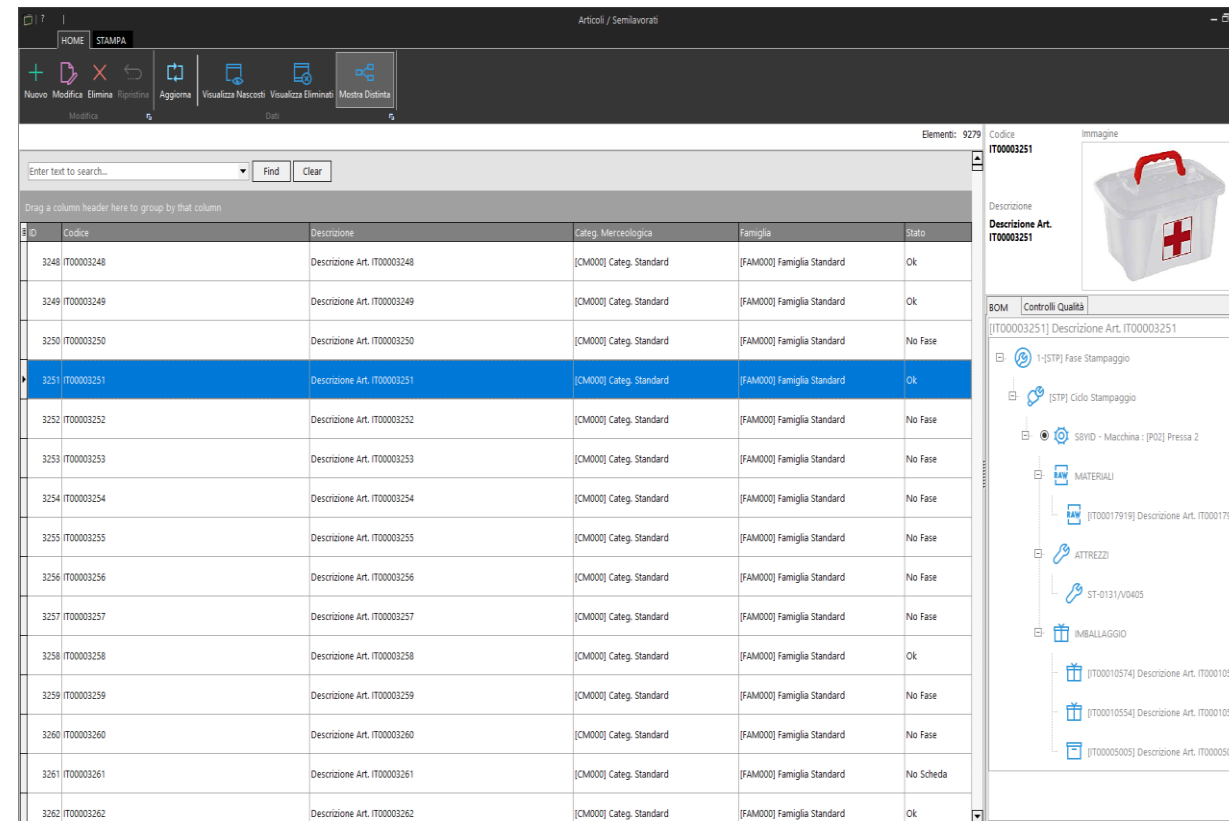


Homepage with menu and features, **designed** on user's needs or on Client's stations.



COMMUNICATION AND DATA EXCHANGE WITH COMPANY SOFTWARE SYSTEM OR "STAND ALONE" OPTION

The program can work both ways, depending on your needs.



The screenshot displays the Polifemo supervision software interface. The main window shows a list of items with columns for ID, Codice, Descrizione, Categ. Mercologica, Famiglia, and Stato. The item with ID 3251 and Codice IT00003251 is highlighted. To the right, a detailed view of this item is shown, including a description, a list of materials, and a BOM (Bill of Materials) tree structure.

ID	Codice	Descrizione	Categ. Mercologica	Famiglia	Stato
3248	IT00003248	Descrizione Art. IT00003248	[CM000] Categ. Standard	[FAM000] Famiglia Standard	Ok
3249	IT00003249	Descrizione Art. IT00003249	[CM000] Categ. Standard	[FAM000] Famiglia Standard	Ok
3250	IT00003250	Descrizione Art. IT00003250	[CM000] Categ. Standard	[FAM000] Famiglia Standard	No Fase
3251	IT00003251	Descrizione Art. IT00003251	[CM000] Categ. Standard	[FAM000] Famiglia Standard	Ok
3252	IT00003252	Descrizione Art. IT00003252	[CM000] Categ. Standard	[FAM000] Famiglia Standard	No Fase
3253	IT00003253	Descrizione Art. IT00003253	[CM000] Categ. Standard	[FAM000] Famiglia Standard	No Fase
3254	IT00003254	Descrizione Art. IT00003254	[CM000] Categ. Standard	[FAM000] Famiglia Standard	No Fase
3255	IT00003255	Descrizione Art. IT00003255	[CM000] Categ. Standard	[FAM000] Famiglia Standard	No Fase
3256	IT00003256	Descrizione Art. IT00003256	[CM000] Categ. Standard	[FAM000] Famiglia Standard	No Fase
3257	IT00003257	Descrizione Art. IT00003257	[CM000] Categ. Standard	[FAM000] Famiglia Standard	No Fase
3258	IT00003258	Descrizione Art. IT00003258	[CM000] Categ. Standard	[FAM000] Famiglia Standard	Ok
3259	IT00003259	Descrizione Art. IT00003259	[CM000] Categ. Standard	[FAM000] Famiglia Standard	No Fase
3260	IT00003260	Descrizione Art. IT00003260	[CM000] Categ. Standard	[FAM000] Famiglia Standard	No Fase
3261	IT00003261	Descrizione Art. IT00003261	[CM000] Categ. Standard	[FAM000] Famiglia Standard	No Sched
3262	IT00003262	Descrizione Art. IT00003262	[CM000] Categ. Standard	[FAM000] Famiglia Standard	Ok

The detailed view on the right shows the following information:

- Descrizione:** IT00003251
- Immagine:** A red first aid kit with a white cross.
- BOM (Bill of Materials):**
 - 1-[STP] Fase Stampaggio
 - 1-[STP] Ciclo Stampaggio
 - SOVID - Macchina : [P02] Pressa 2
 - MATERIALI
 - [IT00017919] Descrizione Art. IT00017919
 - ATTREZZI
 - ST-0131/VO405
 - IMBALLAGGIO
 - [IT00010574] Descrizione Art. IT00010574
 - [IT00010554] Descrizione Art. IT00010554
 - [IT00005005] Descrizione Art. IT00005005

Polifemo supervision software enables management of items, boms and production orders.

We can define choosen items, or take them from Customer's management program.

We can add **pictures or photos** to items to recall their shape or composition.

The solution involves the use of a **production server** as a data collector and **multiple clients** within the network, with variable accesses depending on location and user.



Codice FONTEXASK_H42

Descrizione SUOLE PU (04208)P.SPALLE BIO FOR.IMB.x3Susare imbottitura economica SIN269/B TESTA DI MORO GRATTATO-TABACCO

Categ. Mercatologica Settore Default

Famiglia TEXAS

UM [PA] PA

Numerata: EUROPEA % Sconto 0 Paia a giro 1

[FONTEXASK_H42] SUOLE PU (04208)P.SPALLE BIO FOR.IMB.x3Susare imbottitura economica SIN269/B TESTA DI MORO GRATTATO-TABACCO :

Calzate	40	41	42	43	44	45	46
Matricole	40	41	42	43	44	45	46
Peso gr	145	148	153	160	165	172	179
Inserito							

Stampo 04208-35 Materiale RV-MD Colore Materiale Y46 Inserito SOT3599K_042 Tipo Sottopiede IMB Tipo Tomaia Colore Vernice Y43 Lamina

Fase

- + Nuova
- Alternativa
- Parallela
- Elimina
- Principale
- Det. Codo
- Up
- Down

Scheda

- + Nuova
- Elimina
- Taglia

[FONTEXASK_H42] SUOLE PU (04208)P.SPALLE BIO FOR.IMB.x3Susare imbottitura economica SIN269/B TESTA DI MORO GRATTATO-TABACCO - 40

- 1- [MCH] MACCHINE INIEZIONE
- [MCH] MACCHINE INIEZIONE
- ASD62 - Macchina : [MCH] MACCHINE INIEZIONE

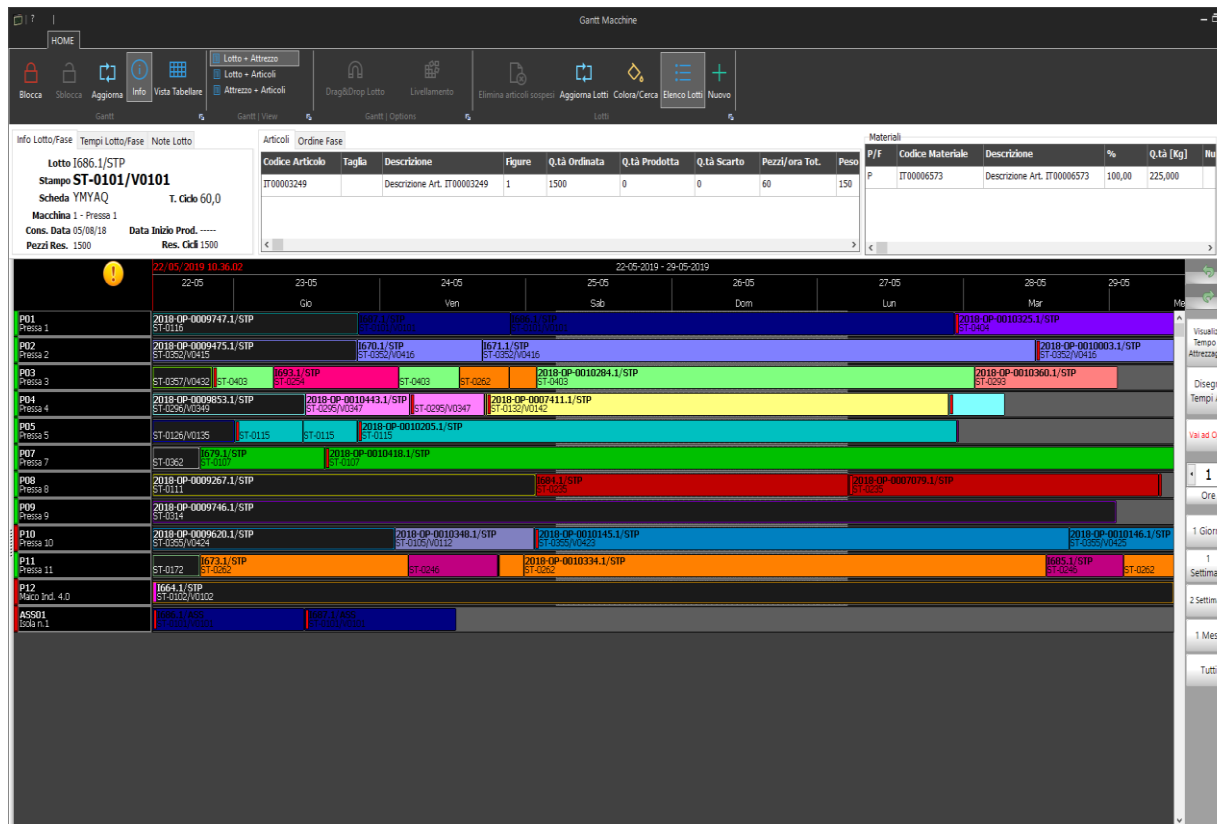
☐ Eliminato

The system provides product master data for **molds by serial number/measure**, which can be associated with item sizes in order to check availability during planning.



PRODUCTION SCHEDULING

GANTT chart showing machinery scheduling.



Each “brick” means an order or a production batch.

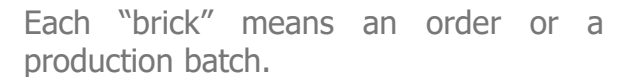
Scheduling is updated and realigned **in real time**, thanks to the direct connection with the department machineries.

The system provides different useful information such as **production completion forecasts**, **workers’ engagement**, **equipping times**, etc.

Scheduling involves the working calendar of the machineries, which can be set and changed.



GANTT chart showing scheduling of each single rotary machine.



Scheduling is updated and realigned at the operator's command, based on real time information from department machines.

The system provides information on individual “bricks”, including **production completion forecasts.**

The Gantt chart **can be highlighted** in various ways to optimize scheduling (e.g. **mold, material, material color, mold/shoe size**).

Scheduling may also be displayed in classic "Remove/Insert" table format.





itaca

TAILOR MADE SOFTWARE SOLUTIONS

PRODUCTION SCHEDULING

Drag & Drop option.

While scheduling, user just **select** the order raw and “**drag**” it to the machine level.

The system, using data from bom list, will automatically allow the release of the order brick only on **suitable machines, compatible with production** of that specific item.

Scheduling can be carried out with **automatic levelling**, as well as manually. Our software, through calculation algorithm will “hook” various programmed orders, according to criteria chosen by the operator.

With the same screen user can search for what has been programmed using the “**Color/Search**” mode, which allows all optimization (by material, by article, by batch ...).



SOLES AND INJECTED SHOES MOLDING PRODUCTION SCHEDULING

2	4	6	8	10	12	14	16	18	20	22	24	26	28	30
32	34	36	38	40	42	44	46	48	50	52	54	56	58	60

OK OK SIM.

Pos.Carr. 0

Ver. 1.00.99

CAMBI STAMPO

Fase Sil.Fondo 0 Fase Sil.Cop. 0 Ciclo Macchina: 803

MILOS MATIC

Giri Tot. 16707

Pos. 17 Marcia

Contapezzi tot. 748138

TOGLIERE		GIRI	METTERE	
Stazione 45 - 46	Art. + Calz. P127 (35) Materiale 68761 Inserto — Marchio —	0 ✓ CONFERMA	P127 68 761 (40) 68761 - SOFT ANTIDROLOSI + FILM XP127:GRIGI	Art. + Calz. 1° Materiale — Inserto — Marchio — Paia 38
Note: paia: +1				
Stazione 59 - 60	Art. + Calz. VUOTO (37) Materiale — Inserto — Marchio —	0 ✓ CONFERMA	A585 07 008 (43) 07008 - LIGHT SECURITY NERO	Art. + Calz. 2° Materiale — Inserto — Marchio — Paia 37
Note: paia: +4				
Stazione 51 - 52	Art. + Calz. A585 (42) Materiale 07008 Inserto — Marchio —	-5 ✓ CONFERMA	A979 06 023 (42) 06023 - SOFT GRIGIO 023 (233)	Art. + Calz. 3° Materiale — Inserto — Marchio — Paia 126
Note:				
Stazione 47 - 48	Art. + Calz. P127 (37) Materiale 68761 Inserto — Marchio —	-9 ✓ CONFERMA	P127 68 761 (39) 68761 - SOFT ANTIDROLOSI + FILM XP127:GRIGI	Art. + Calz. 4° Materiale — Inserto — Marchio — Paia 50
Note:				

8

Scheduling is carried out from the office desk to machine ui. **A simple and intuitive interface** shows the sequence of mold changes to be made on every machine.

The single scheduled batches are **automatically re-aligned**: Polifemo software reduces the laps needed to complete the order, only if the actual casting of the material is recorded.

From this page the **operator confirms the beginning of the production** of the next batch, making sure that the system sends the new parameters to the machine, thus allowing **automatic tooling**.

DEPARTMENT SYNOPTIC

Software, thanks to department synoptic, allows a real-time display of the machines status.



Our synoptic is equal to the **corporate layout** of production departments.

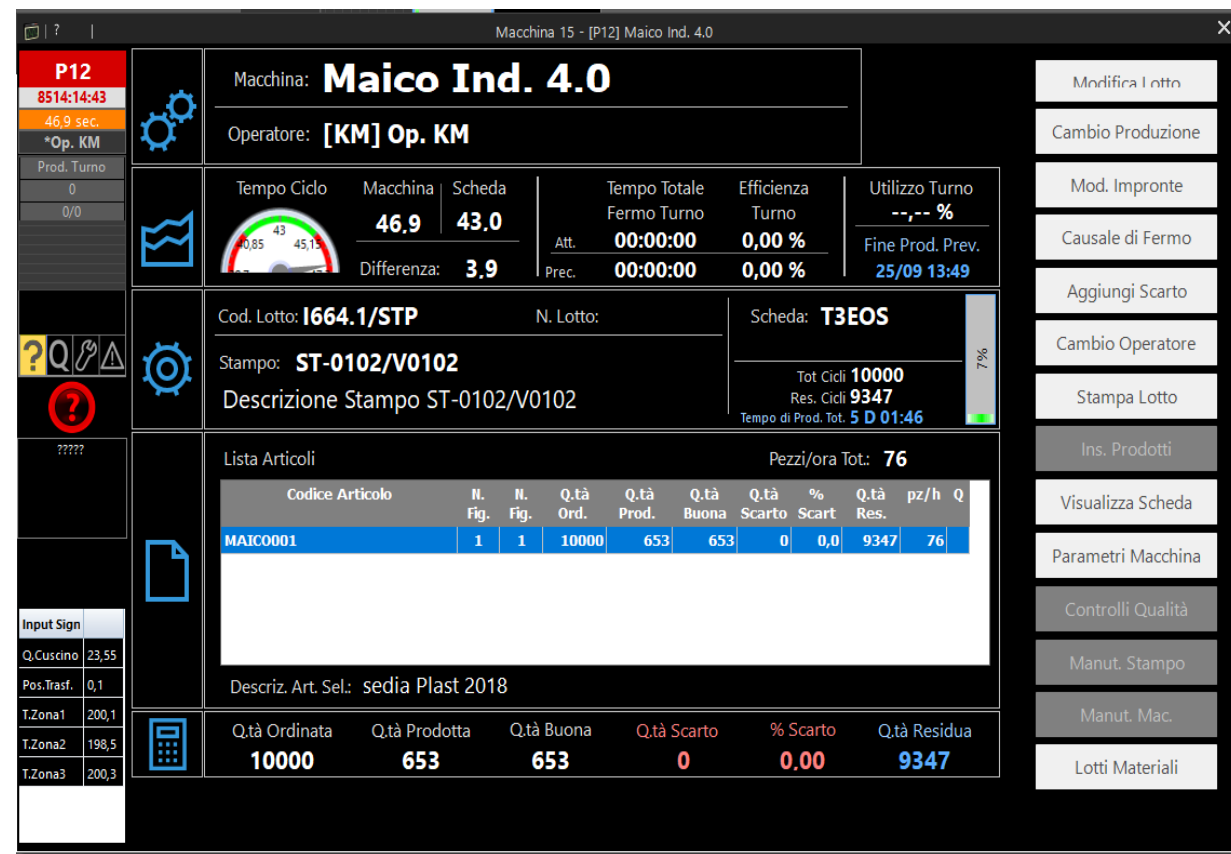
We have **real-time useful information**, such as machine status, duty cycle, order progress, various alarms set up from personal data, the operator code, etcetera.

Connection to machines is defined according to the type of machine itself.

If possible, we prefer connections through predefined standard communication protocols, compliant to **Industry 4.0 protocol**.

MACHINE SYNOPTIC

Here you can find information available for operator and activities that can be performed.



Department Operator, using machine synoptic, can display information on **production**, such as duty cycle progress, rate of job progress, downtime during shift, expected end time and so on.

Operator can carry out **useful activities for proper functioning including definitions for downtime, waste management, production change, alarm management**, batch allocation of used materials.

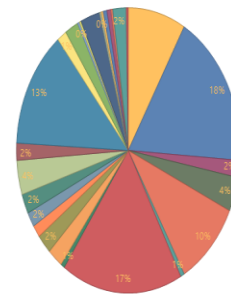
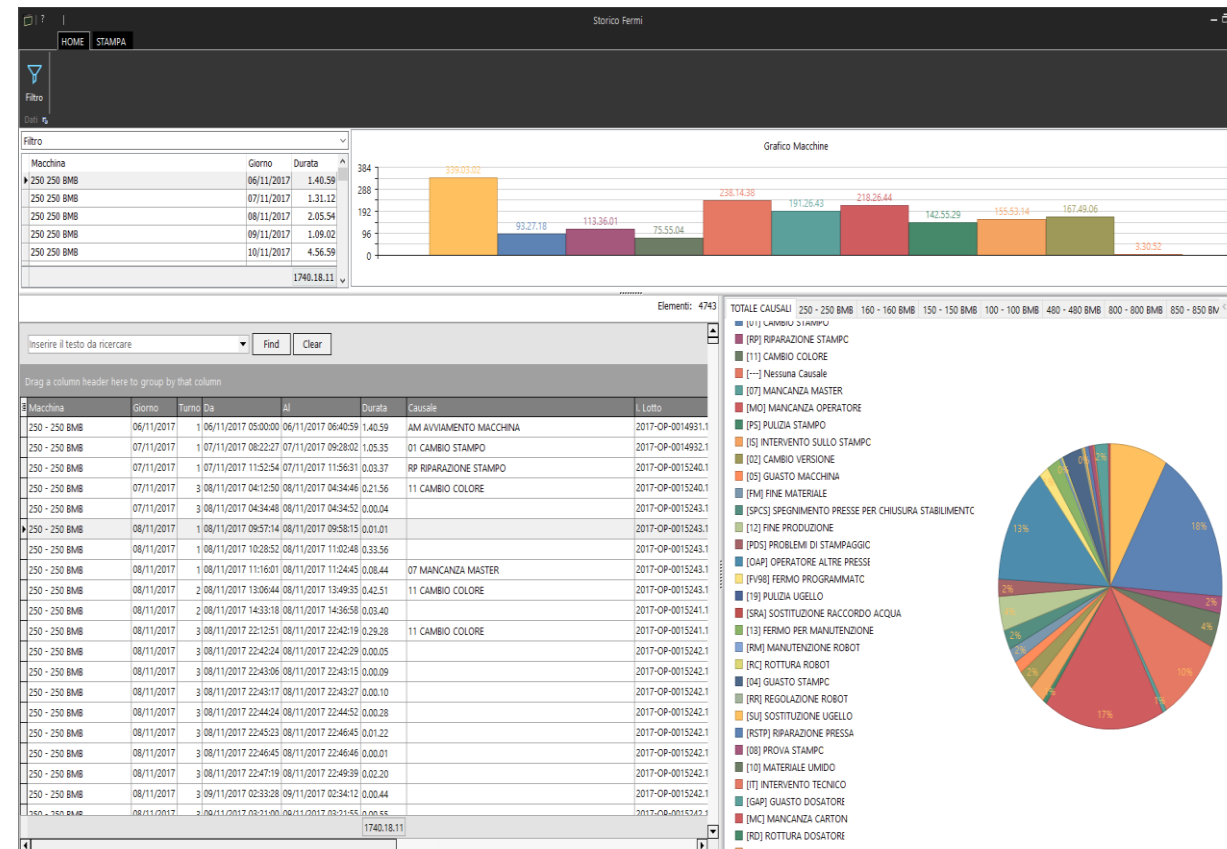
Operator can also view the phase sheet, containing **information on machine working parameters** and further documentation, if any.

PRODUCTION TRACKING

Software supplies production data tracking, thanks to an advanced filter search.

Our software can track production, **downtime and waste**, split by cause, by machine, by article...

Charts with data are available in standard formats and can be exported in many formats, as well as being structured as **Pivot charts**.



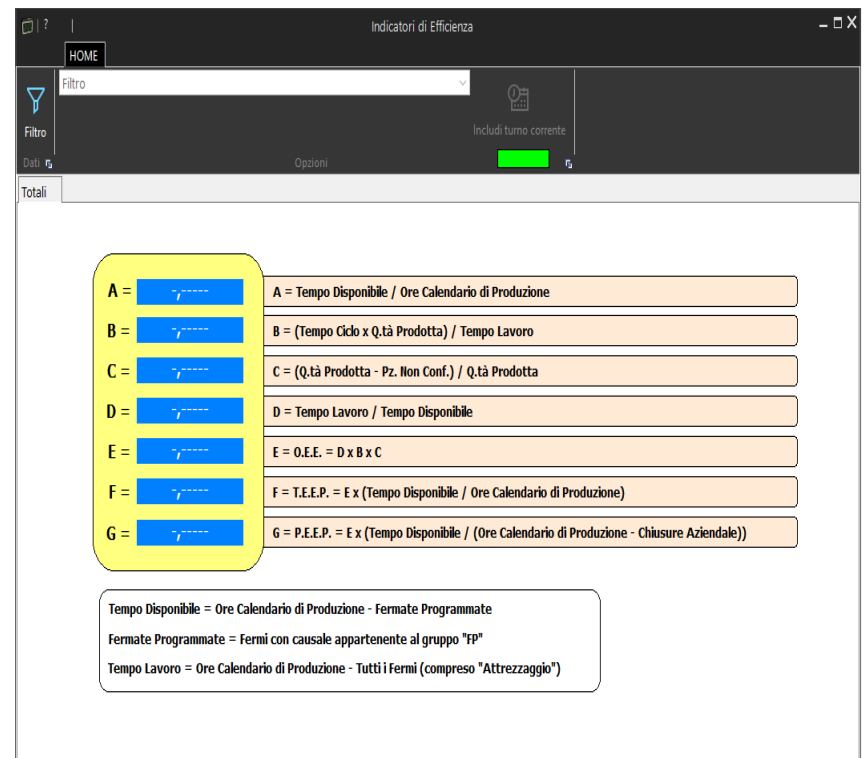
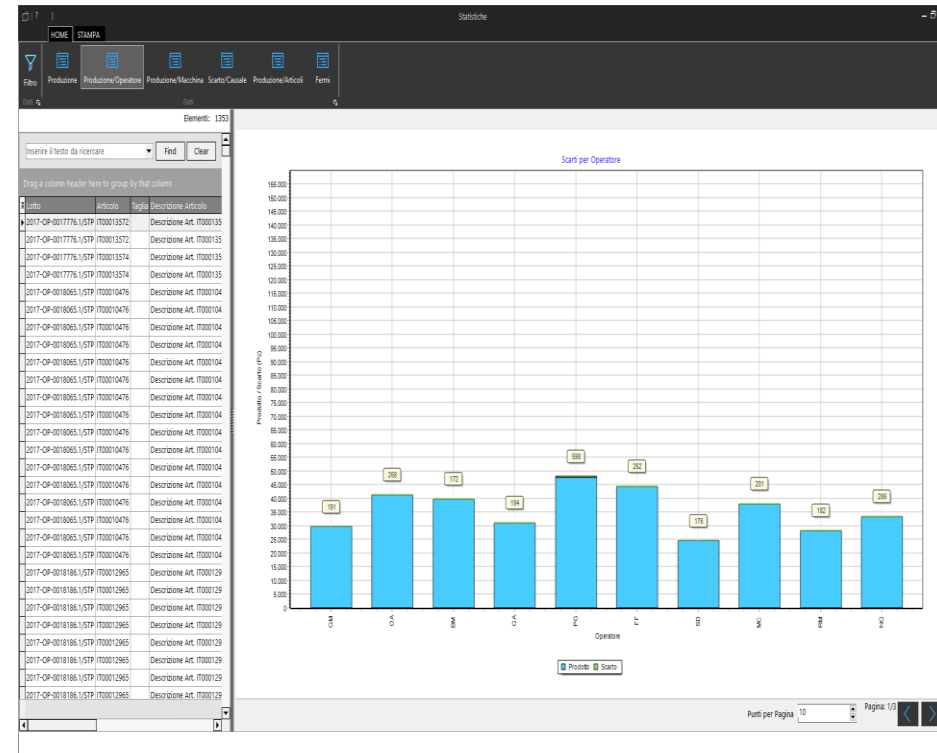


itaca

TAILOR MADE SOFTWARE SOLUTIONS

EFFICIENCY INDEX AND STATISTICS

Software releases production statistics and efficiency index.



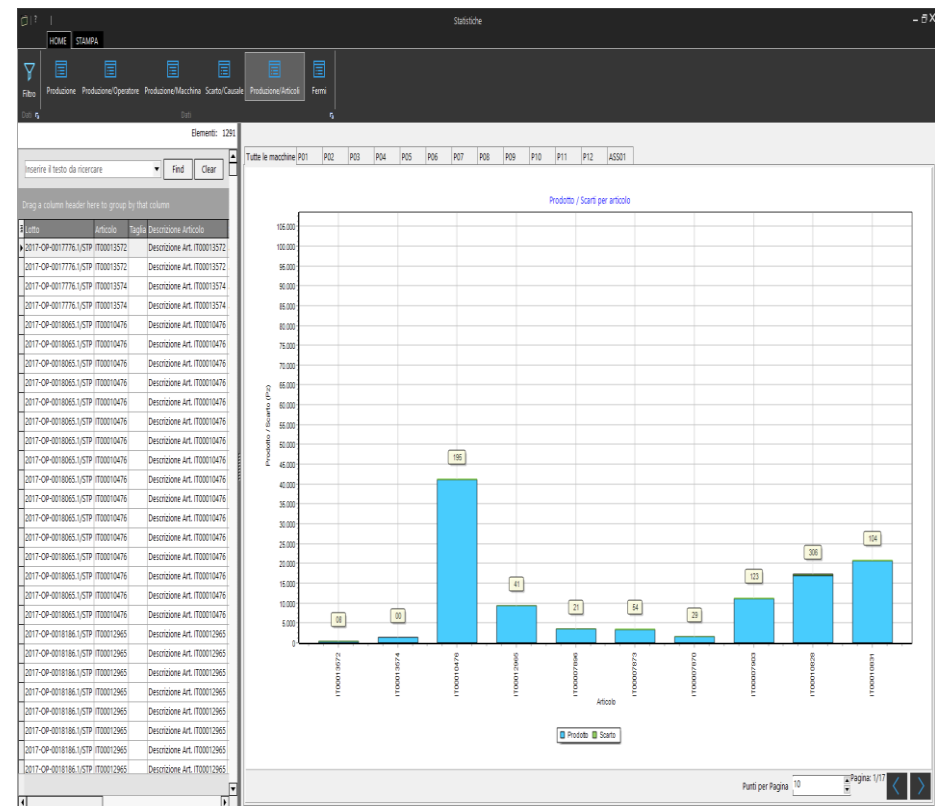
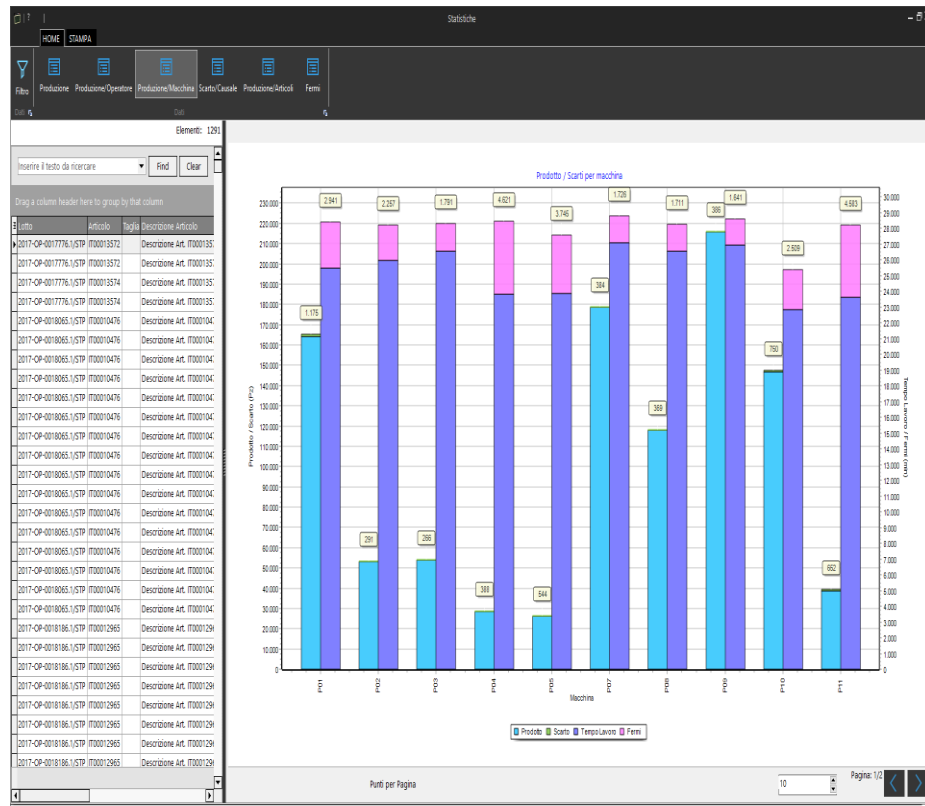
According to customer's needs we can build specific **KPI** and **O.E.E.**





TAILOR MADE SOFTWARE SOLUTIONS

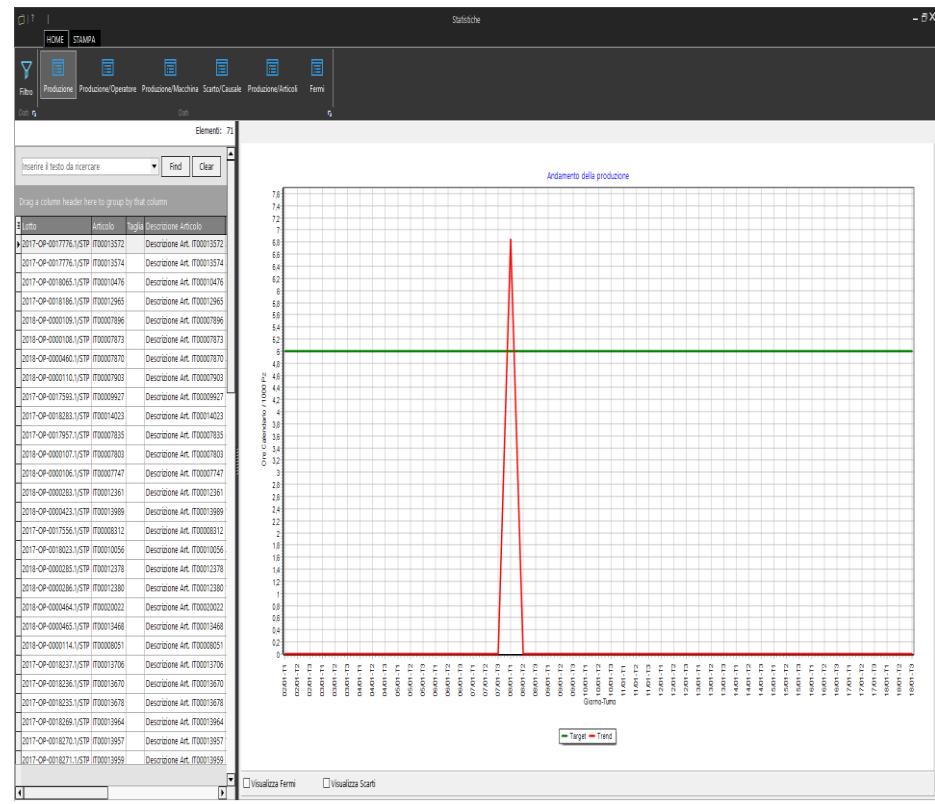
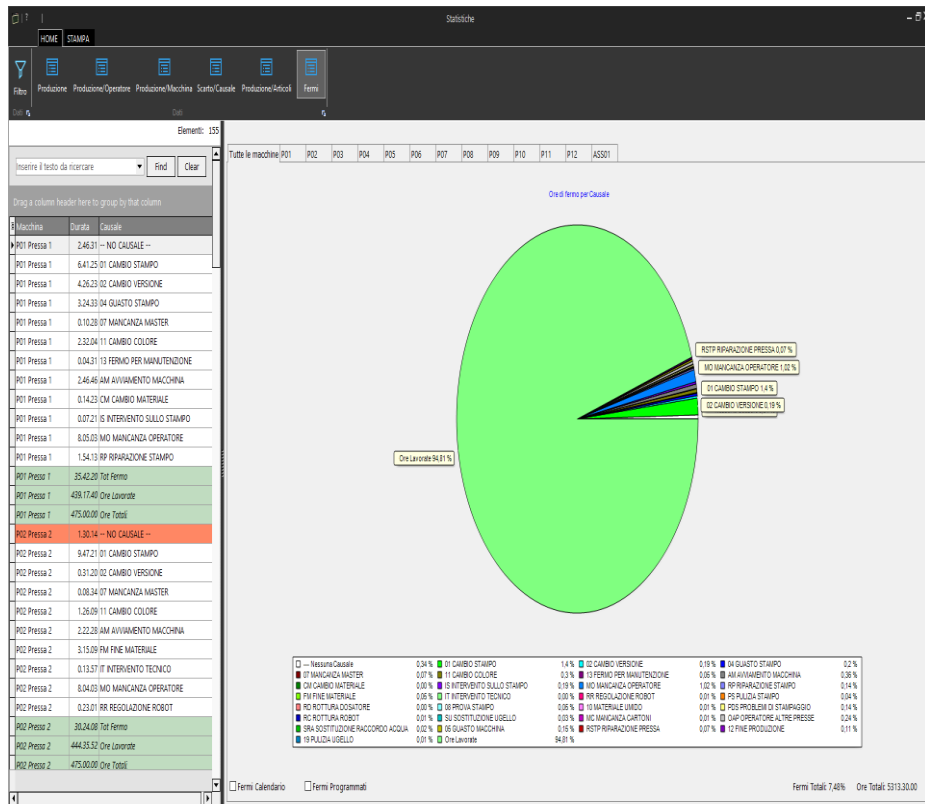
STATISTICS REPORTS



Charts and reports with data split **by machine** and/or **by article**.



STATISTICS REPORTS



Charts and reports with data split by **machine downtime cause** and/or by **production timing**.

POLIFEMO XE will provide

- Batch need assessment.
- Operators time assessment
- Manufacturing process management
- Quality Control on every single order, with specific alerts.
- Maintenance Control with specific alerts.
- Label printing management.
- Material traceability and tracking.
- Document Management in PDF and JPG format.

Production Management System POLIFEMO XE main features

- Modules integrated with customer management system.
- Customized interfaces.
- Operational flexibility.
- Clients managed from more platforms, fixed and mobile.
- Tracking data exportable in standard formats.
- Alert management with customized outputs.
- Compliance with Industry 4.0 requirements.

ITACA SRL

via Sandro Pertini, 12

63812 • Montegranaro (FM) • Italy

Tel. +39 0734.445279 - 445294

Fax. +39 0734.893202

E-Mail: info@itacasw.it

Internet: www.itacasw.it

VAT. N. IT01187300437

